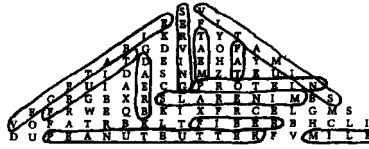


Answer Sheet

Activity Sheet 1

1. True
2. b
3. False
4. True
5. True
6. b
7. b
8. c

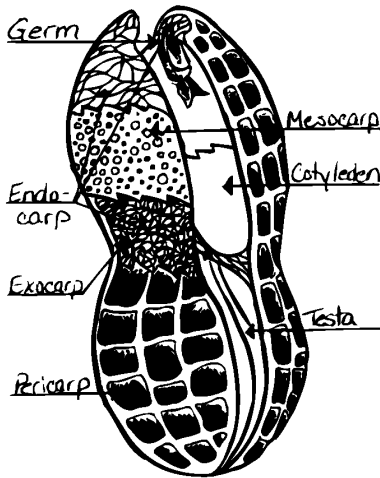
Activity Sheet 4



Activity Sheet 8

1. 1
2. 75
3. 2,400
4. 1
5. 49
6. 1,600,00
7. 25
8. 540

Activity Sheet 2



Activity Sheet 5

1. United States
2. Brazil
3. Argentina
4. Senegal
5. Nigeria
6. Sudan
7. Zaire
8. South Africa
9. India
10. China
11. Thailand
12. Indonesia

Activity Sheet 10

Make Peanut Butter!

- A: 563
 B: 1472
 E: 1356
 K: 1039
 M: 1685
 N: 741
 P: 1552
 R: 1048
 T: 755
 U: 1529

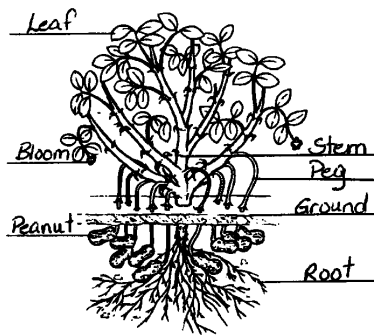
Activity Sheet 6

1. 16
2. 8 g
3. 0 g
4. 2.5 g
5. 150 mg
6. 190
7. 4%

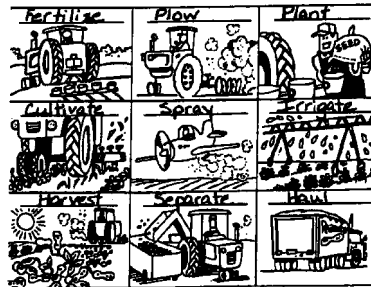
Activity Sheet 11

1,500

Activity Sheet 3



Activity Sheet 7



Activity Sheet 12





What do you know about Peanuts?



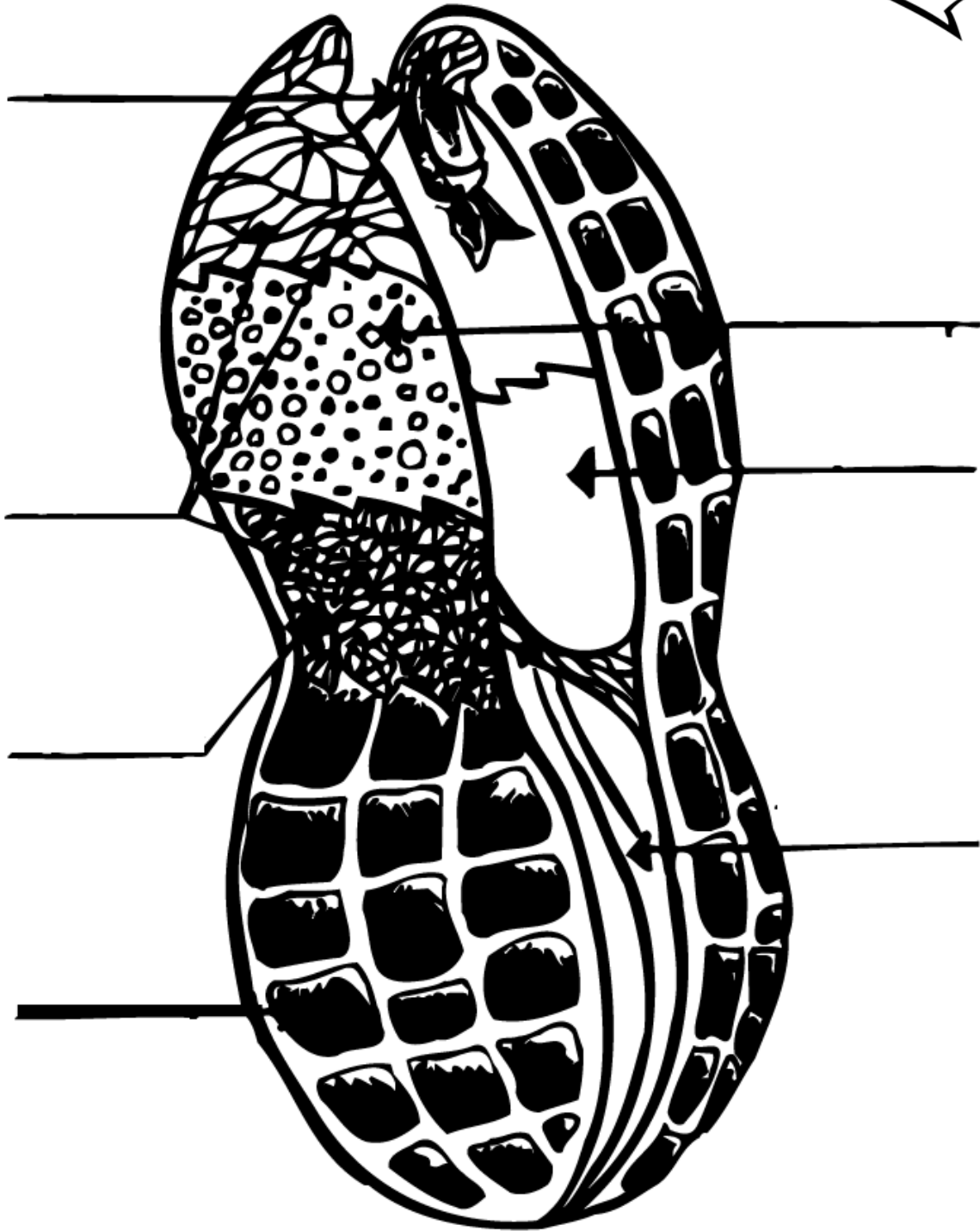
Name _____

Circle the correct answer.

1. Peanuts are not nuts.
True False
2. Peanuts grow _____.
a) on trees b) below ground c) on bushes
3. The U.S. is the top peanut producing country in the world.
True False
4. Georgia is the top peanut producing state in the country.
True False
5. Peanuts were first found in South America.
True False
6. Dr. George Washington Carver, an African American scientist, discovered uses for peanuts.
a) 100 b) 300 c) 500
7. Peanut butter is rich in _____. This puts it in the meat group.
a) Vitamin C b) protein c) salt d) Vitamin E
8. Each American eats about _____ pounds of peanut products every year.
a) 2 b) 5 c) 9 d) 12

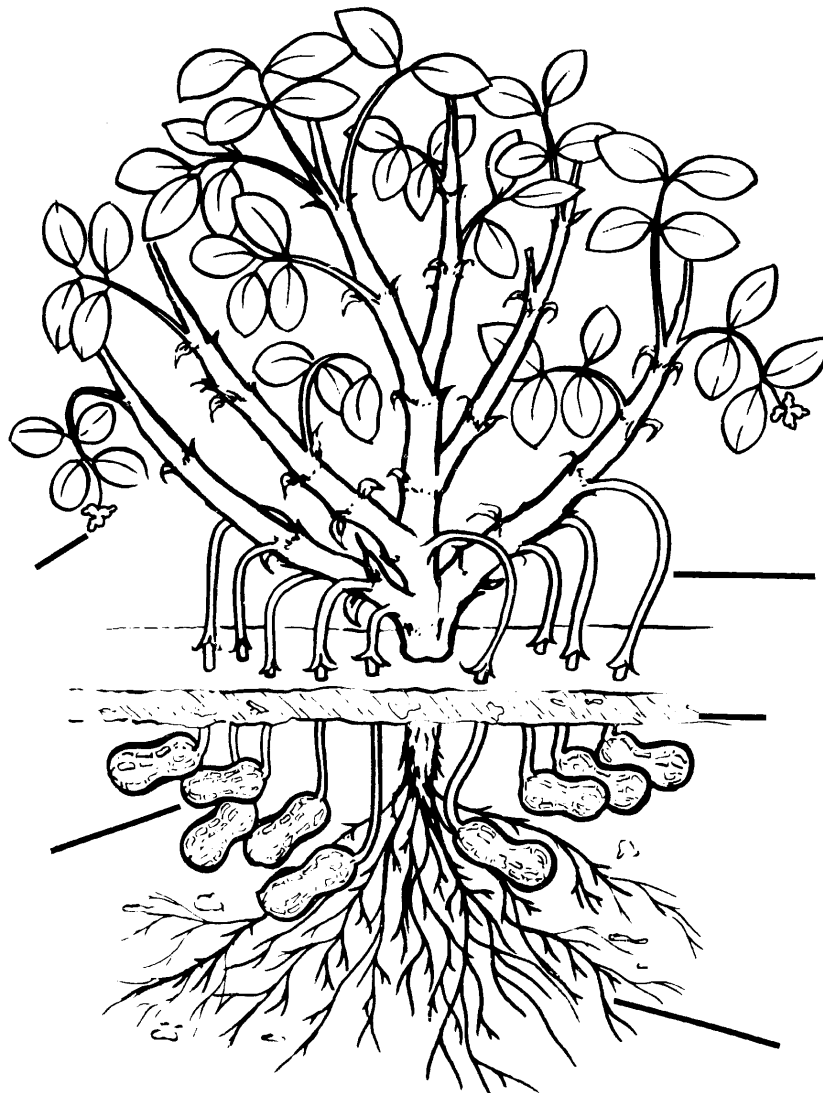
Label the parts of the peanut below.

2



Name _____

Can you label the parts of the peanut plant below?



Root
Peanut

Peg
Ground
Leaf

Bloom
Stem

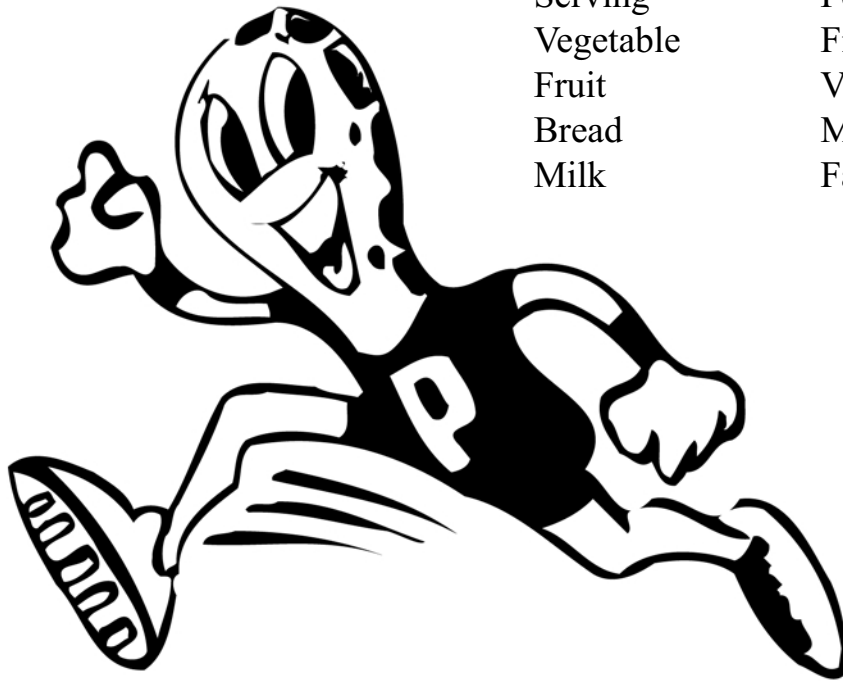
Pyramid Word Puzzle

See if you can find the “nutritious” words listed below in the pyramid word puzzle. Remember, the words may be backwards or forwards, horizontal or vertical, or diagonal.



Word List

- | | |
|-----------|---------------|
| Protein | Meat |
| Serving | Peanut Butter |
| Vegetable | Fiber |
| Fruit | Vitamins |
| Bread | Minerals |
| Milk | Fat |



Name _____

S V
E E F I
L K R T Y T
B G D V A O F A
A T D E I E H A Y M
T I D A S N M Z T E U I
E U I A E C G P R O T E I N
G R G B X R S L A R E N I M B S
E F R W E Q B K I X F R C E L G M S
V O F A T R B K L T F I B E R B H C L I
D U P E A N U T B U T T E R F V M I L K

A. The countries marked on the map below grow peanuts. Can you name them? You may use a world map or globe to help you identify them.

- | | | |
|----------------------------------|----------|-----------|
| 1. <u>Example: United States</u> | 5. _____ | 9. _____ |
| 2. _____ | 6. _____ | 10. _____ |
| 3. _____ | 7. _____ | 11. _____ |
| 4. _____ | 8. _____ | 12. _____ |



B. The following countries import peanuts from the United States. Color them in on the map above.

- | | | | | |
|---------|--------|-------------|-------------|--------|
| England | Canada | Netherlands | France | Norway |
| Japan | Spain | Germany | Switzerland | Italy |

Name: _____

